

INVESTOR INFORMATION

(As of March 31, 2009)

Founded September 1905
Incorporated June 1911
Employees 9,932 (Consolidated 33,526)
Fiscal Year April 1 – March 31
Ordinary General Meeting of Stockholders June of each year

Authorized and Issued Share Capital

Authorized: 6,000,000,000 shares
 Issued: 3,115,061,100 shares

Principal Stockholders

At March 31, 2009, the ten largest stockholders of the Company Stockholdings were as follows:

	Thousands of shares	Percent
Japan Trustee Services Bank, Ltd. (Trust Account 4G)	146,985	4.72
Nippon Life Insurance Company	125,310	4.02
Japan Trustee Services Bank, Ltd. (Trust Account)	116,611	3.74
Nippon Steel Corporation	107,345	3.45
Sumitomo Metal Industries, Ltd.	107,345	3.45
The Master Trust Bank of Japan, Ltd. (Trust Account)	90,480	2.90
Mizuho Corporate Bank, Ltd.	70,369	2.26
Mitsubishi UFJ Trust and Banking Corporation	52,333	1.68
The Bank of Tokyo-Mitsubishi UFJ, Ltd.	47,348	1.52
Sojitz Corporation	45,016	1.45

*The Company's holdings of treasury stock (107,602 thousand shares) are not included in the above figures.

Listing and Quotations

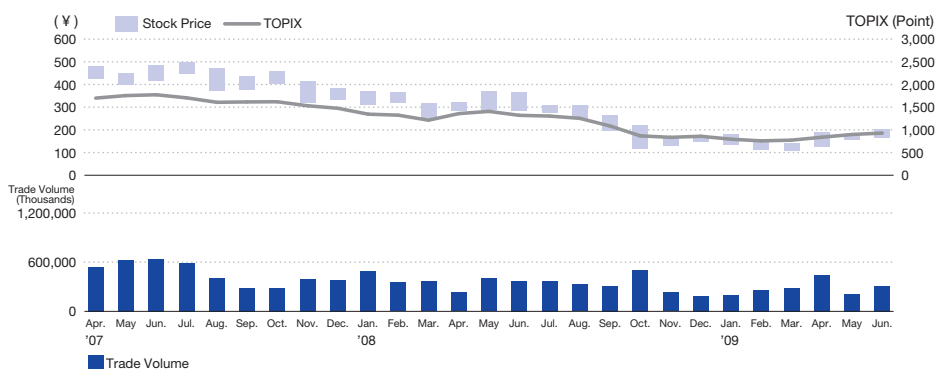
Kobe Steel is listed on the Tokyo Stock Exchange, the Osaka Securities Exchange and the Nagoya Stock Exchange in Japan. American Depositary Receipts for common stock are traded over the counter in the United States.

Depository for American Depositary Receipts

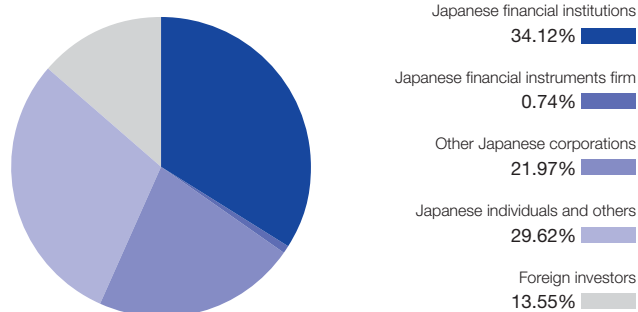
The Bank of New York Mellon
 101 Barclay Street, New York, NY 10286, U.S.A.
 Tel: +1-201-680-6825
 U.S. toll free: 888-269-2377 (888-BNY-ADRS)
 URL: <http://www.adrbnymellon.com>
 SYMBOL: KBSTY
 CUSIP: 499892107
 EXCHANGE: OTC

Common Stock Price Range

Tokyo Stock Exchange (High / Low)



Distribution of Shares



Directors' and Corporate Auditors' Stockholdings

The following is a list of the directors and corporate auditors and their stockholdings in the Company at March 31, 2009.

	Number of shares owned
Hiroshi Sato	180,000
Tomoyuki Kaya	109,000
Takashi Matsutani	125,000
Kazuo Shigekawa	89,000
Tetsu Takahashi	49,120
Yutaka Kawata	81,000
Hiroaki Fujiwara	57,000
Tsuyoshi Kasuya	46,000
Atsushi Nakano	10,000
Yukio Doi	20,000
Toru Asaoka	124,000
Toshinori Okoshi	49,000
Takasuke Kaneko	43,000
Yoshikazu Ikeda	7,000
Shigeo Sasaki	2,000

Public Notices

<http://www.kobelco.co.jp>

All public notices of the Company shall be given by electronic means. In the event that the Company is unable to give electronic public notice, the public notices shall be published in the Nihon Keizai Shimbun.

Transfer Agent & Office

Mitsubishi UFJ Trust and Banking Corporation
 4-5, Marunouchi 1-chome, Chiyoda-ku, TOKYO 100-8212, JAPAN

Independent Auditors

KPMG AZSA & Co.
 6-5, Kawara-machi 3-chome, Chuo-ku, OSAKA 541-0048, JAPAN

Information

Japan

IR Group
 Corporate Planning Department
 Kobe Steel, Ltd.
 9-12, Kita-Shinagawa 5-chome, Shinagawa-ku,
 TOKYO 141-8688, JAPAN
 Tel: +81-3-5739-6045 Fax: +81-3-5739-5973
 URL: <http://www.kobelco.com>

U.S.A.

Kobe Steel USA Inc.
 535 Madison Avenue, 5th Floor, New York,
 NY 10022, U.S.A.
 Tel: +1-212-751-9400 Fax: +1-212-355-5564