

Investor Information (As of March 31, 2001)

Founded: September 1905

Incorporated: June 1911

Employees: 9,828 (Consolidated 30,129)

Fiscal Year: April 1 — March 31

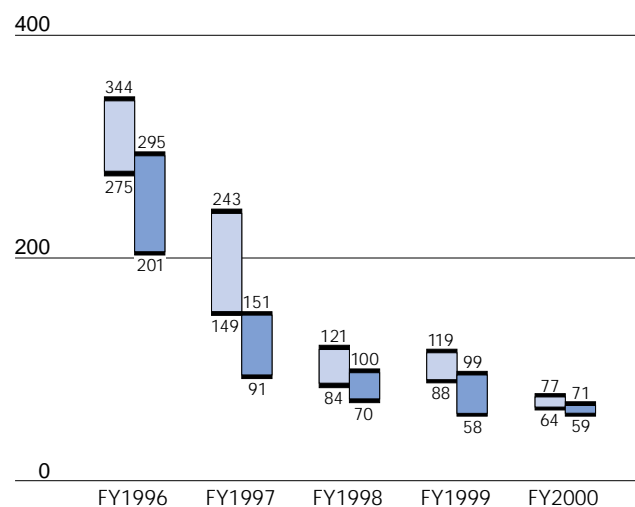
General Meeting: The ordinary general meeting of the Company's stockholders is usually held in Kobe, Japan in June of each year.

Distribution of Shares:

	Number of stockholders	Thousands of shares
Japanese financial institutions	199	1,130,510
Japanese securities companies	160	17,440
Other Japanese corporations	2,547	534,120
Japanese individuals and others	271,042	1,075,751
Foreign investors	300	78,161
TOTAL	274,248	2,835,982

Common Stock Price Range:

(Yen) (Tokyo Stock Exchange)



 First Half
  Second Half

Listings and Quotations: Kobe Steel is listed on the Tokyo Stock Exchange, the Osaka Securities Exchange and the three other exchanges in Japan. Overseas, the Company's shares are listed on the London Stock Exchange. American Depositary Receipts for common stock are traded over the counter in the United States.

Depository for American Depositary Receipts:

The Bank of New York Company, Inc,
101 Barclay Street, New York, NY 10286, U.S.A.
Tel: (212) 815-2204 (U.S. toll free: 888-269-2377)
URL: <http://www.bankofny.com/adr>

Public Notices:

The Nihon Keizai Shimbun
The Kobe Shimbun

Transfer Agent & Office:

The Mitsubishi Trust & Banking Corporation
11-1, Nagata-cho 2-chome, Chiyoda-ku, TOKYO 100-8212, JAPAN

Independent Auditors:

Asahi & Co.
8-47, Kakuta-cho, Kita-ku, OSAKA 530-8345, JAPAN

Information:

Japan
IR Group
Corporate Planning Department
Kobe Steel, Ltd.
9-12, Kita-Shinagawa 5-chome,
Shinagawa-ku, TOKYO 141-8688, JAPAN
Tel: (03) 5739-6043 Fax: (03) 5739-5973
U.S.A.
Kobe Steel USA Inc.
535 Madison Avenue, New York, NY 10022, U.S.A.
Tel: (212) 751-9400 Fax: (212) 308-3116

E-mail: www-admin@kobelco.co.jp

URL: <http://www.kobelco.co.jp>