

Investor Information (As of March 31, 2002)

Founded: September 1905

Incorporated: June 1911

Employees: 9,674 (Consolidated 26,978)

Fiscal Year: April 1 – March 31

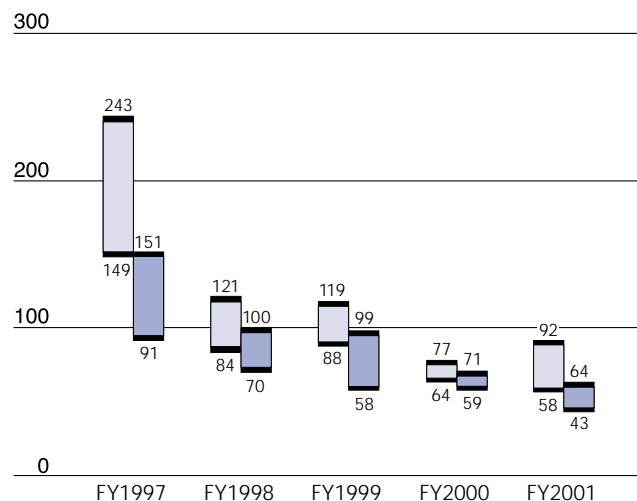
General Meeting: The ordinary general meeting of the Company's stockholders is usually held in Kobe, Japan in June of each year.

Distribution of Shares:

	Number of stockholders	Thousands of shares
Japanese financial institutions	192	1,098,674
Japanese securities companies	158	19,224
Other Japanese corporations	2,523	511,512
Japanese individuals and others	273,207	1,161,577
Foreign investors	285	76,563
TOTAL	276,365	2,867,550

Common Stock Price Range:

(Yen) (Tokyo Stock Exchange)



First Half
 Second Half

Listings and Quotations: Kobe Steel is listed on the Tokyo Stock Exchange, the Osaka Securities Exchange and the three other exchanges in Japan. Overseas, the Company's shares are listed on the London Stock Exchange. American Depositary Receipts for common stock are traded over the counter in the United States.

Depository for American Depositary Receipts:

The Bank of New York Company, Inc.
 101 Barclay Street, New York, NY 10286, U.S.A.
 Tel: (212) 815-2042 (U.S. toll free: 888-269-2377)
 URL: <http://www.adrbny.com>

Public Notices:

The Nihon Keizai Shimbun
The Kobe Shimbun

Transfer Agent & Office:

The Mitsubishi Trust & Banking Corporation
 11-1, Nagata-cho 2-chome, Chiyoda-ku, TOKYO
 100-8212, JAPAN

Independent Auditors:

Asahi & Co.
 8-47, Kakuta-cho, Kita-ku, OSAKA 530-8345, JAPAN

Information:

Japan
 IR Group
 Corporate Planning Department
 Kobe Steel, Ltd.
 9-12, Kita-Shinagawa 5-chome,
 Shinagawa-ku, TOKYO 141-8688, JAPAN
 Tel: (03) 5739-6043 Fax: (03) 5739-5973

U.S.A.
 Kobe Steel USA Inc.
 535 Madison Avenue, New York, NY 10022, U.S.A.
 Tel: (212) 751-9400 Fax: (212) 308-3116

E-mail: www-admin@kobelco.co.jp

URL: <http://www.kobelco.co.jp>