

Investor Information (As of March 31, 2003)

Founded:

September 1905

Incorporated:

June 1911

Employees:

9,122 (Consolidated 26,765)

Fiscal Year:

April 1— March 31

General Meeting:

The ordinary general meeting of the Company's stockholders is usually held in Kobe, Japan in June of each year.

Listings and Quotations:

Kobe Steel is listed on the Tokyo Stock Exchange, the Osaka Securities Exchange and the Nagoya Stock Exchange in Japan. American Depositary Receipts for common stock are traded over the counter in the United States.

Depository for American Depositary Receipts:

The Bank of New York Company, Inc.
101 Barclay Street, New York, NY 10286, U.S.A.
Tel: (212) 815-2042 (U.S. toll free: 888-269-2377)
URL: <http://www.adrbny.com>

Public Notices:

The Nihon Keizai Shimbun
The Kobe Shimbun

Transfer Agent & Office:

The Mitsubishi Trust & Banking Corporation
4-5, Marunouchi 1-chome, Chiyoda-ku, TOKYO 100-8212, JAPAN

Independent Auditors:

Asahi & Co.
8-47, Kakuta-cho, Kita-ku, OSAKA 530-8345, JAPAN

Information:

Japan

IR Group
Corporate Planning Department
Kobe Steel, Ltd.
9-12, Kita-Shinagawa 5-chome
Shinagawa-ku, TOKYO 141-8688, JAPAN
Tel: (03) 5739-6043 Fax: (03) 5739-5973

U.S.A.

Kobe Steel USA Inc.
535 Madison Avenue, New York, NY 10022, U.S.A.
Tel: (212) 751-9400 Fax: (212) 308-3116

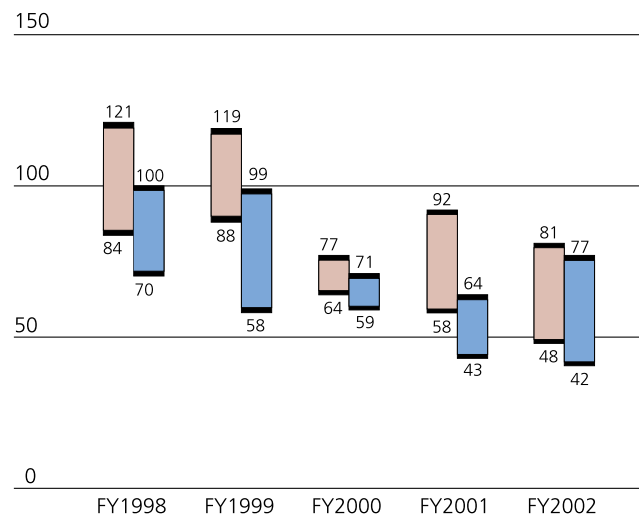
URL: <http://www.kobelco.co.jp>

Distribution of Shares:

	Number of stockholders	Thousands of shares
Japanese financial institutions	152	1,215,279
Japanese securities companies	79	15,756
Other Japanese corporations	1,765	541,558
Japanese individuals and others	180,664	1,029,772
Foreign investors	254	104,548
TOTAL	182,914	2,906,913

Common Stock Price Range:

(Yen) (Tokyo Stock Exchange)



 First Half  Second Half