

# High-Formable Cold-rolled / Hot-dip galvanized Steel Sheet

## Effect

High strengthening and weight saving of Automotive body frame (BIW) parts

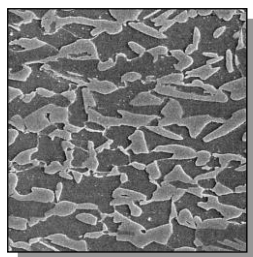
## Characteristic

Achievement of high strengthening and weight saving by higher formability than that of conventional DP steel

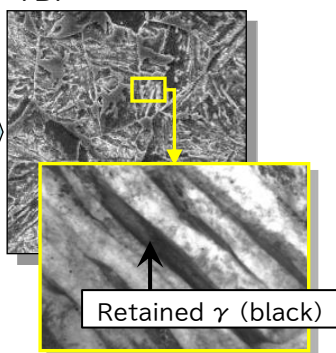
### ■ Concept in micro-structure

Utilizes a structure with uniform dispersion of fine retained  $\gamma$  (TBF), which is different from conventional DP steel, by devising a heat cycle.  
⇒ High elongation

Conventional DP



TBF



### ■ Example

#### Use of Kobe original A-pillar die

Conventional DP



TBF



No crack

#### Use of Kobe original front side member kick

Conventional DP



Crack

TBF



No crack

### ■ Typical properties

	YS (MPa)	TS (MPa)	EL (%)	$\lambda$ (%)
CR/GA980TBF	650	1020	22	25
CR/GA1180TBF	950	1220	15	35