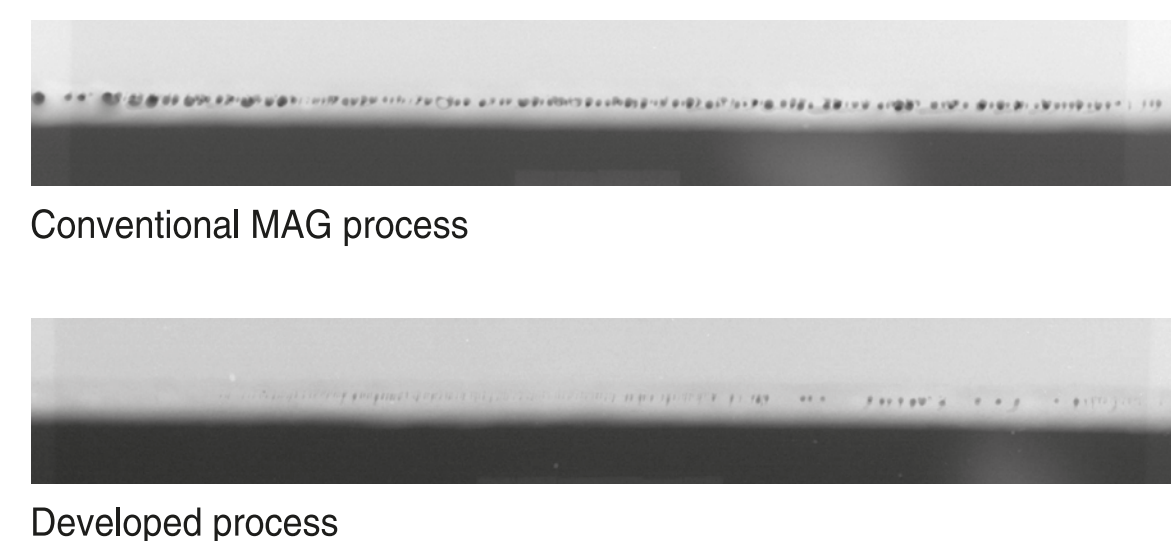
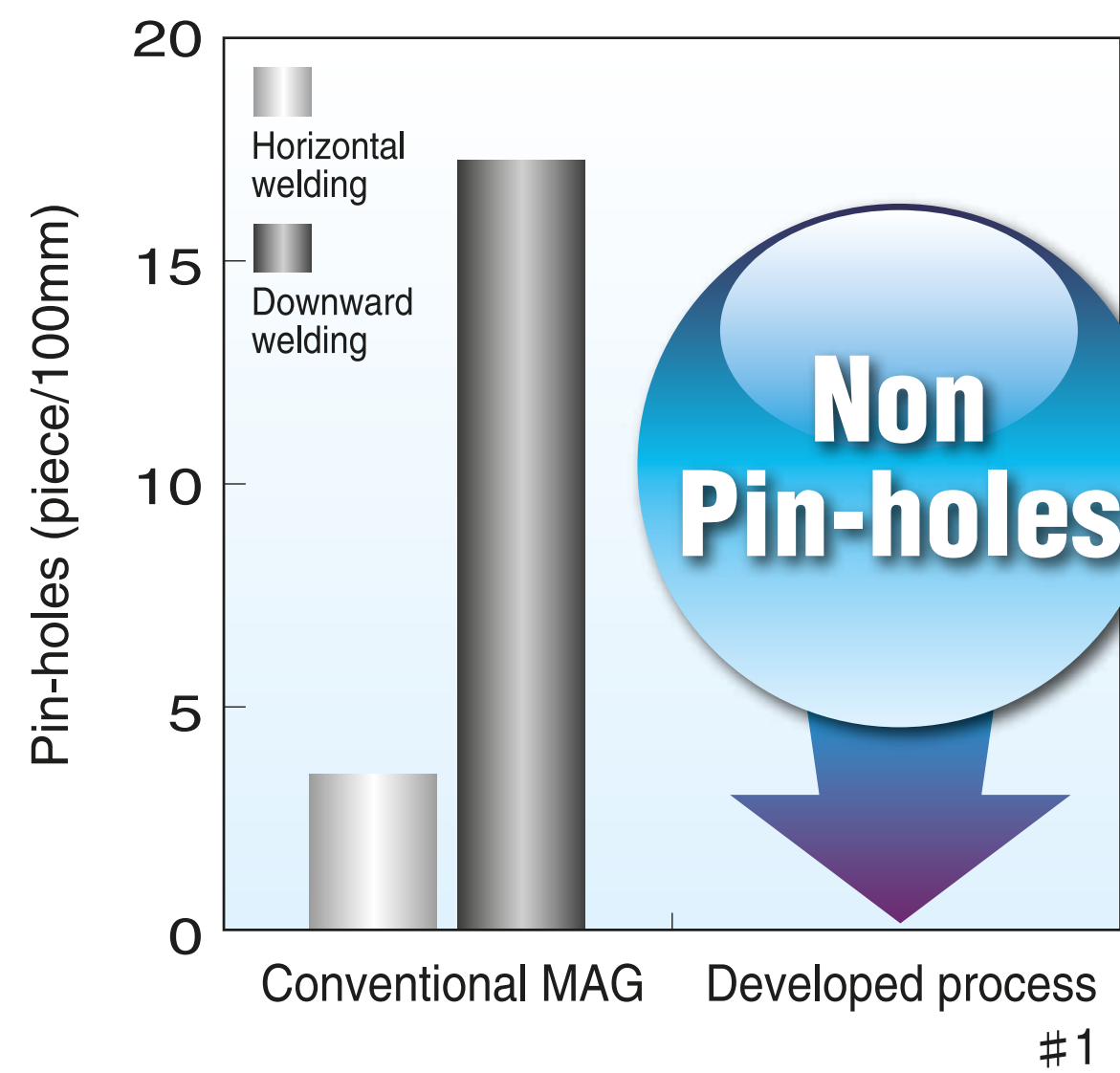


Evolutionary Welding Process for Galvanized Steel Sheets

Reduction of porosity defect



Pulse MAG·MIG Automatic Power Source

Welbee Inverter P500L

DAIHEN



Welding Robot Almega Premium Friendly Series

FD-B4

DAIHEN

Welding Solid Wire

FAMILIARC™ MIX-Zn 1.0mm dia.

KOBELCO



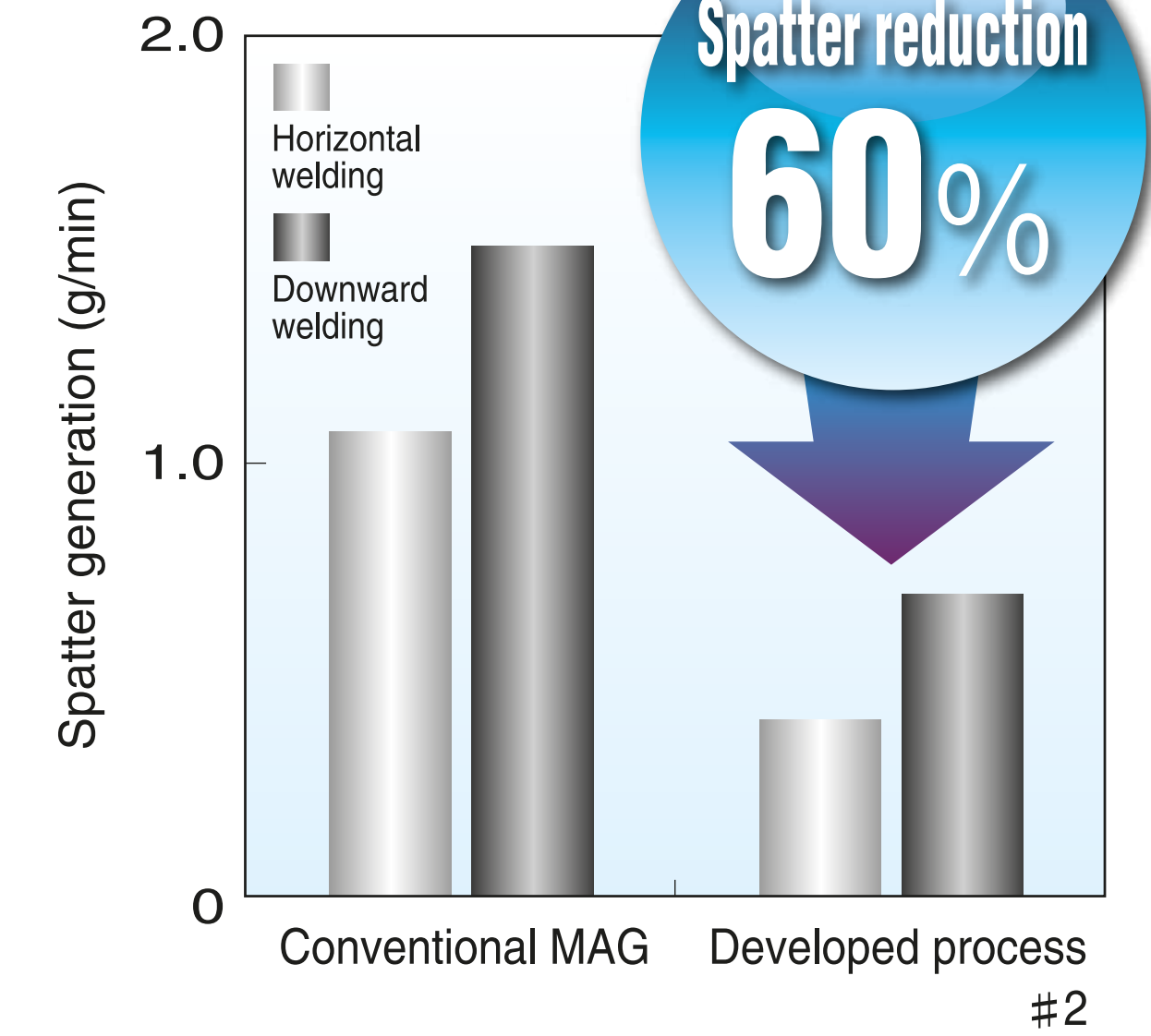
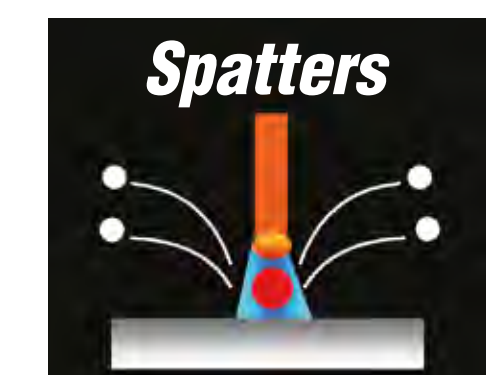
Welding solution for galvanized steel sheets

J-Solution™ Zn

Shielding Gas

Ar70%+CO₂30%

Reduction of spatter generation



#1, #2 Welding condition;

- Base metal: Galvanized steel sheet (Zinc content; 45g/m²), 2.3mm thickness
 - Fillet welding of lap joint (Root gap: 0)
 - Conventional process: 1.2mm dia. conv. wire + conventional pulse power (rectangle wave) + mixed gas (80% Ar & 20% CO₂)
- Immunity from responsibility matter;
This is just one example. The result cannot be guaranteed as various welding conditions affect the outcome.