

KOBELCO at a Glance – Fiscal 2011

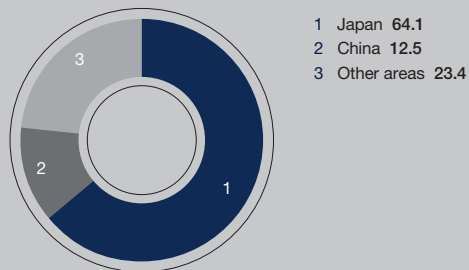


Composition of net sales by business segment (%)



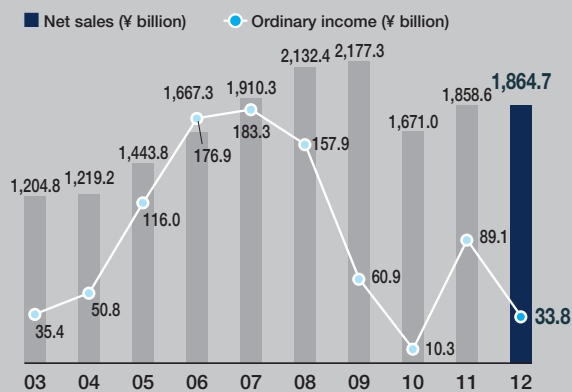
Composition of net sales by business segment includes intersegment transactions and adjustments.

Composition of net sales by geographic area (%)

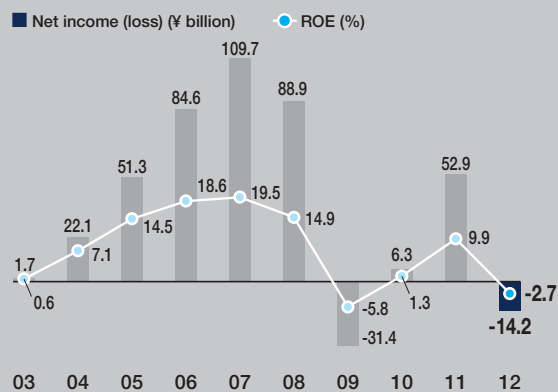


Composition of net sales by geographic area is classified by country based on customer location.

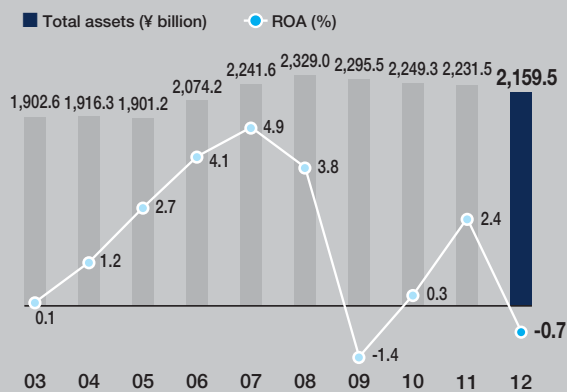
Net sales and ordinary income



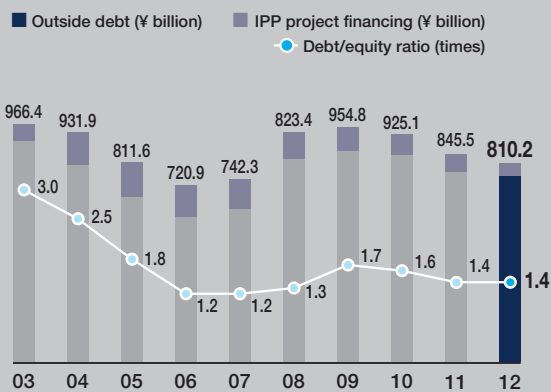
Net income (loss) and ROE



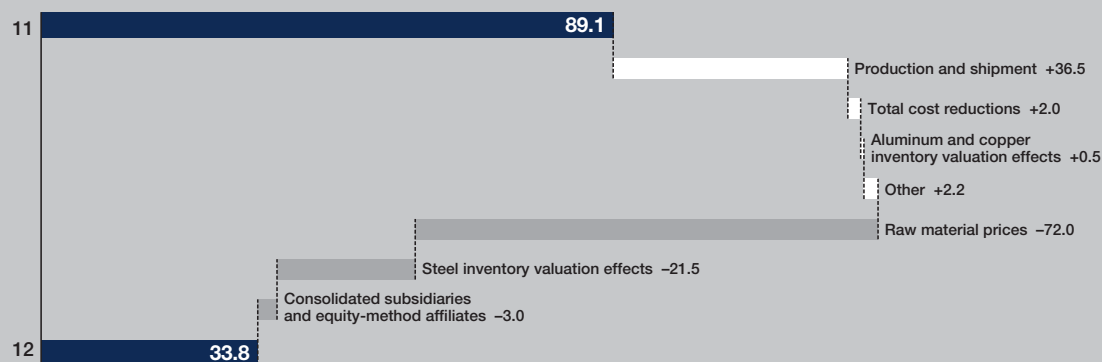
Total assets and ROA



Outside debt and debt/equity ratio



Breakdown of factors affecting ordinary income (¥ billion)



Iron & Steel Business



Consisting of steel products, steel castings and forgings, titanium, steel powder and wholesale power supply business divisions, the Iron & Steel Business makes every effort to strengthen *monozukuri-ryoku*, or its manufacturing capabilities, focusing on improvements in productivity and cost competitiveness. The business promotes the global development of “Only One” products and technologies as well as a shift to areas of growing demand. In addition, Shinko Kobe Power Inc. works to maintain a stable wholesale power supply structure with a maximum power generation capacity of 1.4 million kilowatts.

Main products and services

- Ordinary wire rod
- Specialty steel wire rod
- Ordinary steel bar
- Specialty steel bar
- Heavy plate, medium plate and sheet (hot-rolled, cold-rolled, surface treated)
- Steel billets
- Steel castings and forgings
- Titanium and titanium alloys
- Steel powder
- Foundry pig iron
- Pig iron for steelmaking
- Slag products
- Stainless steel tube
- Building materials
- Specialty steel products
- Steel wire
- Wholesale electric power supply



Net sales breakdown

44.2%

Creating “Only One” Products and Technologies in Diverse Fields

Natural Resources & Engineering Business



Backed by a wealth of experience, the Natural Resources & Engineering Business offers equipment manufacturing and plant engineering services in the ironmaking and energy fields. Kobe Steel leads the world in both direct reduction (DR) processes and the development of new ironmaking technology that eliminates the need for blast furnaces. While aggressively pursuing business development globally, Kobe Steel aims to expand earnings.

Main products and services

- Ironmaking plants (direct reduction)
- Other plants and equipment (Pelletizing, petrochemical, etc.)
- Nuclear power-related plants
- Erosion control and disaster prevention structures
- Civil engineering
- Advanced urban transit systems



Net sales breakdown

2.9%

Welding Business



The Welding Business offers a diverse range of welding products and services, providing comprehensive welding solutions that encompass welding consumables, power sources and welding systems. While firmly maintaining its No. 1 position in the Asian market, Kobe Steel seeks to expand even further overseas, on its way to becoming a top global manufacturer in the welding industry.

Main products and services

- Covered welding electrodes
- Welding wires for automatic and semi-automatic welding
- Flux
- Welding robots
- Welding power sources
- Welding robot systems
- Welding-related testing, analysis and consulting



— The Nine Business Domains of the Kobe Steel Group

Kobelco Eco-Solutions



As an environmental solutions company that meets the needs of the times, Kobelco Eco-Solutions Co., Ltd. contributes to society by providing products, technologies and services that protect nature and improve the living environment.

Main products and services

- Industrial water, water and sewage plants and equipment
- Ultrapure and pure water, industrial water and waste water treatment equipment
- Recycling plants for processing organic waste materials such as sewage sludge and foodstuffs
- Industrial cooling towers and cooling towers for district heating and cooling
- Municipal waste incineration and melting plants
- Recycling facilities for bulky waste
- PCB waste treatment facilities
- Final disposal of waste material
- Glass-lined equipment
- Polymerization equipment and reactors
- Separation and refining equipment
- Powder machinery
- High-purity hydrogen oxygen generator
- Environmental analysis



Aluminum & Copper Business



The Aluminum & Copper Business is working to strengthen and expand its distinctive “Only One” products by positioning the automotive and IT industries as key fields. As Japan’s top-class maker of aluminum and copper products, Kobe Steel is reinforcing its overseas development based on its technologies and reliability developed over many years’ time.

Main products and services

- Aluminum can stock
- Aluminum sheet for heat exchangers
- Automotive aluminum sheet
- Aluminum extrusions
- Aluminum disk material for HDDs
- Aluminum foil
- Copper sheet and strip for semiconductors
- Copper sheet and strip for automotive terminals
- Leadframes
- Condenser tubes
- Copper tube for air conditioners
- Aluminum-alloy and magnesium-alloy castings and forgings
- Fabricated aluminum products



Net sales breakdown



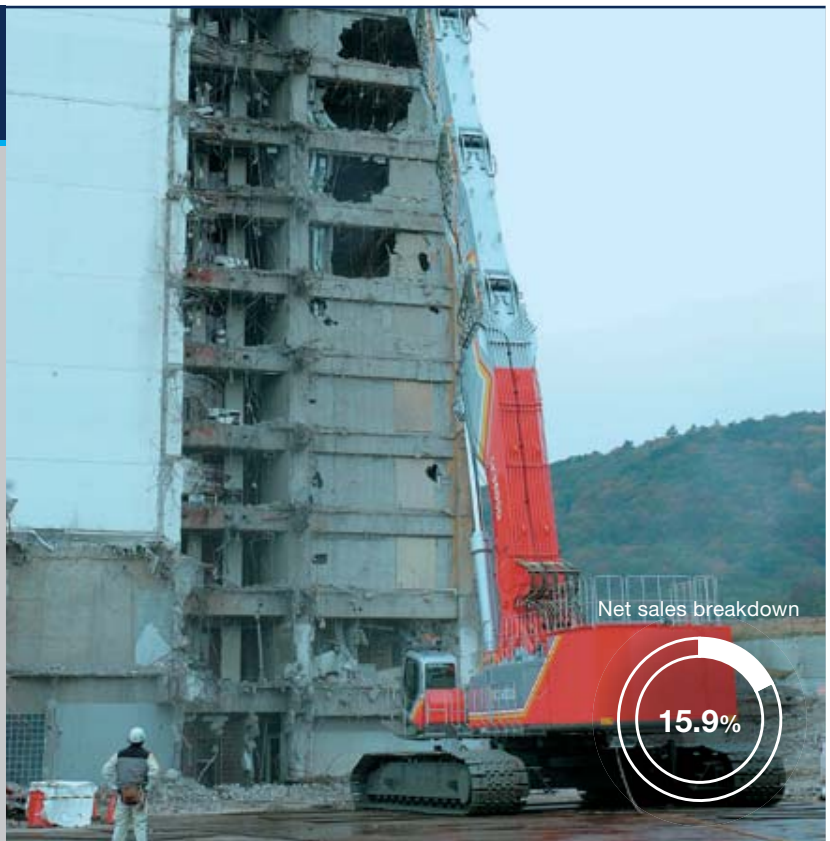
Kobelco Construction Machinery



As a manufacturer of hydraulic excavators, Kobelco Construction Machinery Co., Ltd. develops innovative products with a focus on low-noise, fuel-efficient equipment and responds to a diverse range of customer needs. Through its global alliance with CNH Global N.V., Kobelco Construction Machinery is concentrating its management resources on the growing markets of China, Southeast Asia and India while raising its global presence.

Main products and services

- Hydraulic excavators
- Mini excavators
- Wheel loaders
- Road-building equipment



Net sales breakdown



Machinery Business



The Machinery Business offers a broad product range, including industrial machinery, compressors, and equipment for the energy and nuclear power fields. Kobe Steel is creating original products and technologies to meet global demand in environmental, energy, automobile and other growth markets. At the same time, the Company has taken steps to boost its manufacturing capabilities and to build an optimal production structure.

Main products and services

- Equipment for energy and chemical fields
- Equipment for nuclear power plants
- Tire and rubber machinery
- Plastic processing machinery
- Ultrahigh pressure equipment
- Physical vapor deposition systems
- Roll to roll deposition system
- Metalworking machinery
- Compressors
- Refrigeration compressors
- Heat pumps
- Plants (steel rolling, non-ferrous, etc.)
- Internal combustion engines



Net sales breakdown

7.9%

Kobelco Cranes



As a construction machinery manufacturer that specializes in the crane business, Kobelco Cranes Co., Ltd. is developing appealing new products and strengthening its business foundation to support globalization. Based on its technologies developed over the years and the strength of its brand, Kobelco Cranes is undertaking activities aimed at making the Company more globally prominent.

Main products and services

- Crawler cranes
- Rough terrain cranes
- Work vessels



Net sales breakdown

2.5%

Other Businesses

The Kobe Steel Group has developed a variety of businesses, including real estate and electronics materials, as part of its Other Businesses segment.



Net sales breakdown

3.5%