

Welding Consumables for Shipbuilding



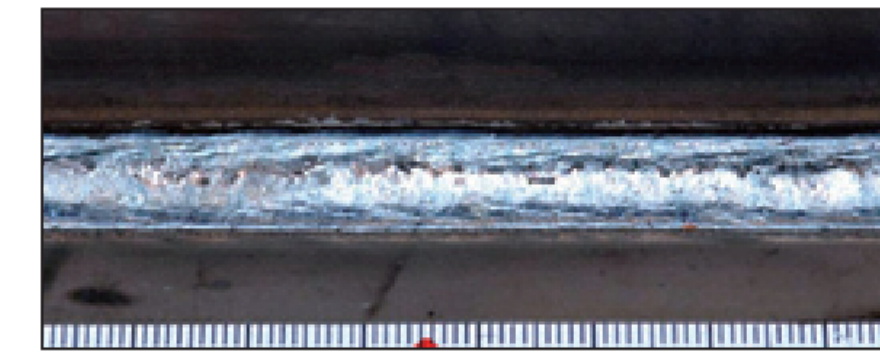
FAMILIARC
DW-100



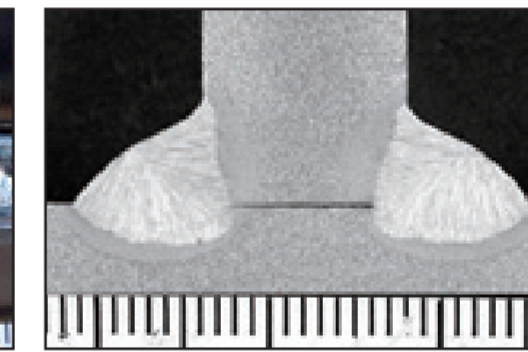
Twin-Tandem One-Pool Method



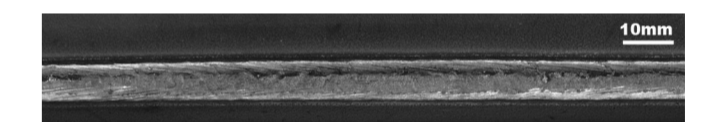
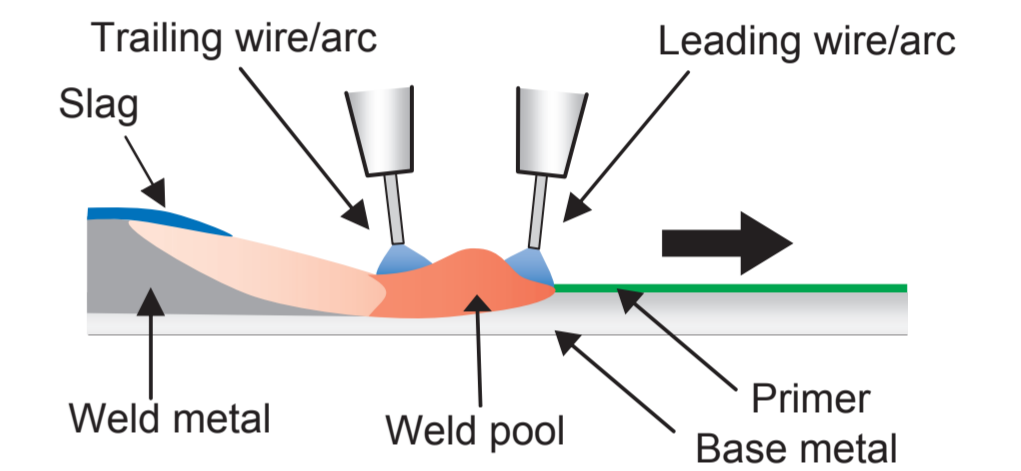
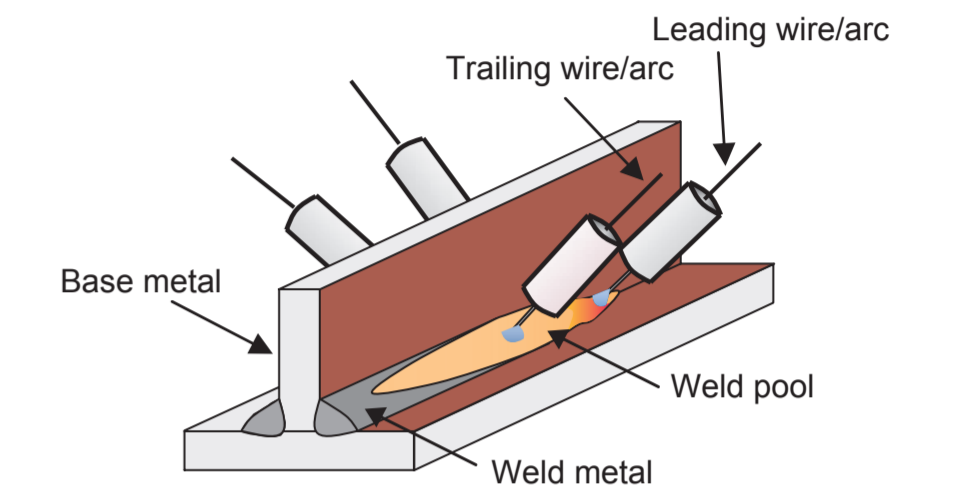
FAMILIARC
MX-200H



Example of bead appearance and macro structure



Twin Tandem One Pool Method

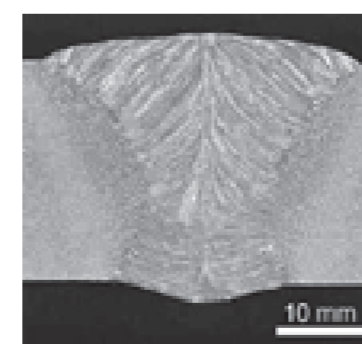
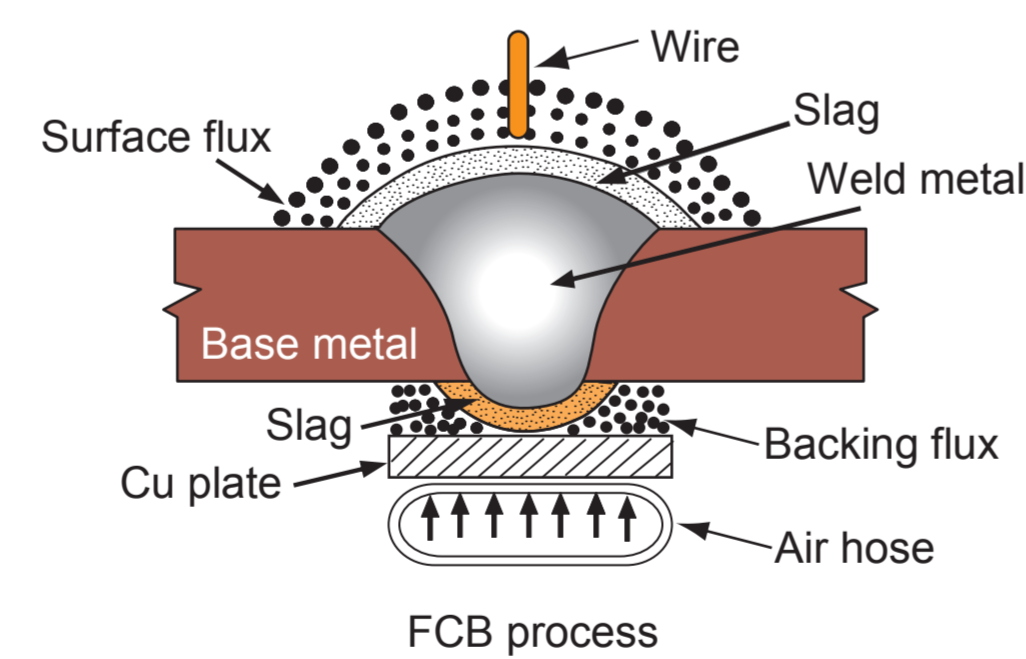


FCB Process

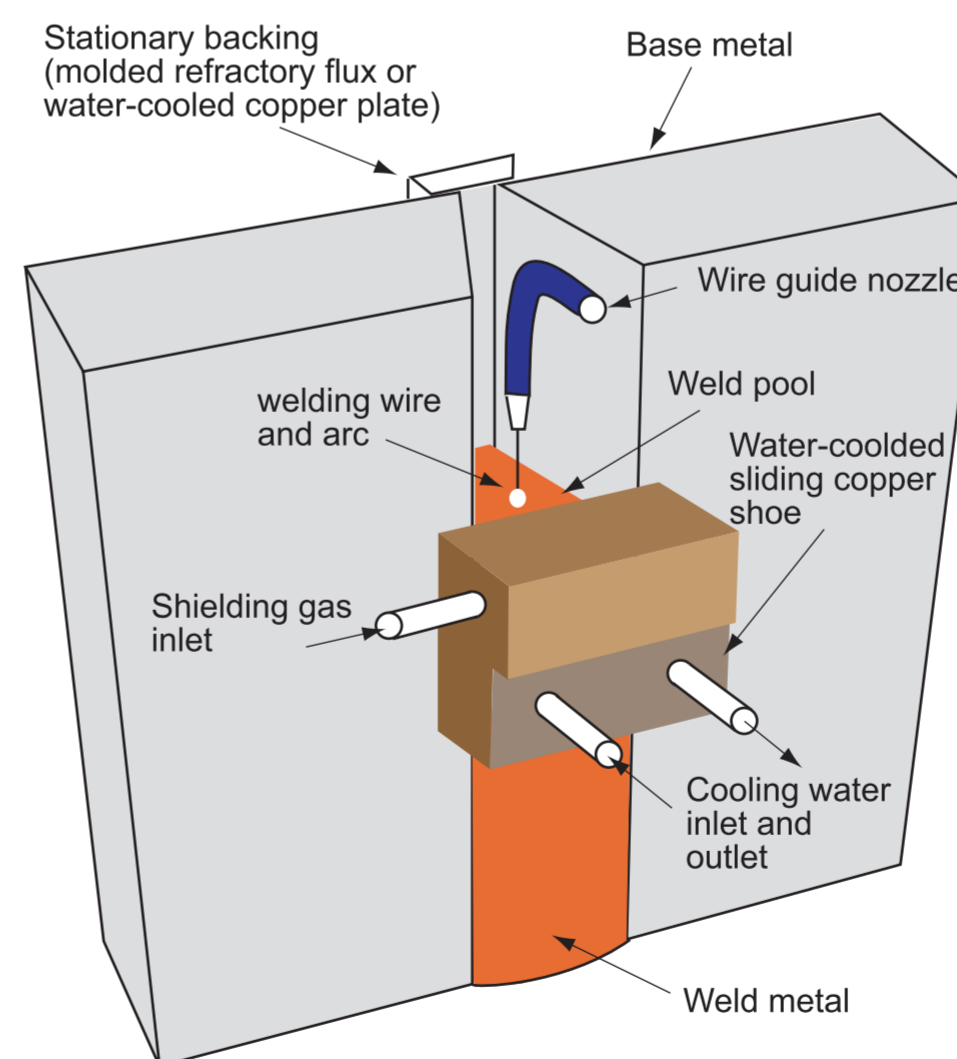


FAMILIARC **FAMILIARC** **FAMILIARC**
PF-155E / US-36 / PF-150R

FCB Process



SEGARC Process



FAMILIARC
DW-S43G

Current (A)	Voltage (V)	Travel speed (cm/min)	Heat input (kJ/cm)
400	43	2.6	397

