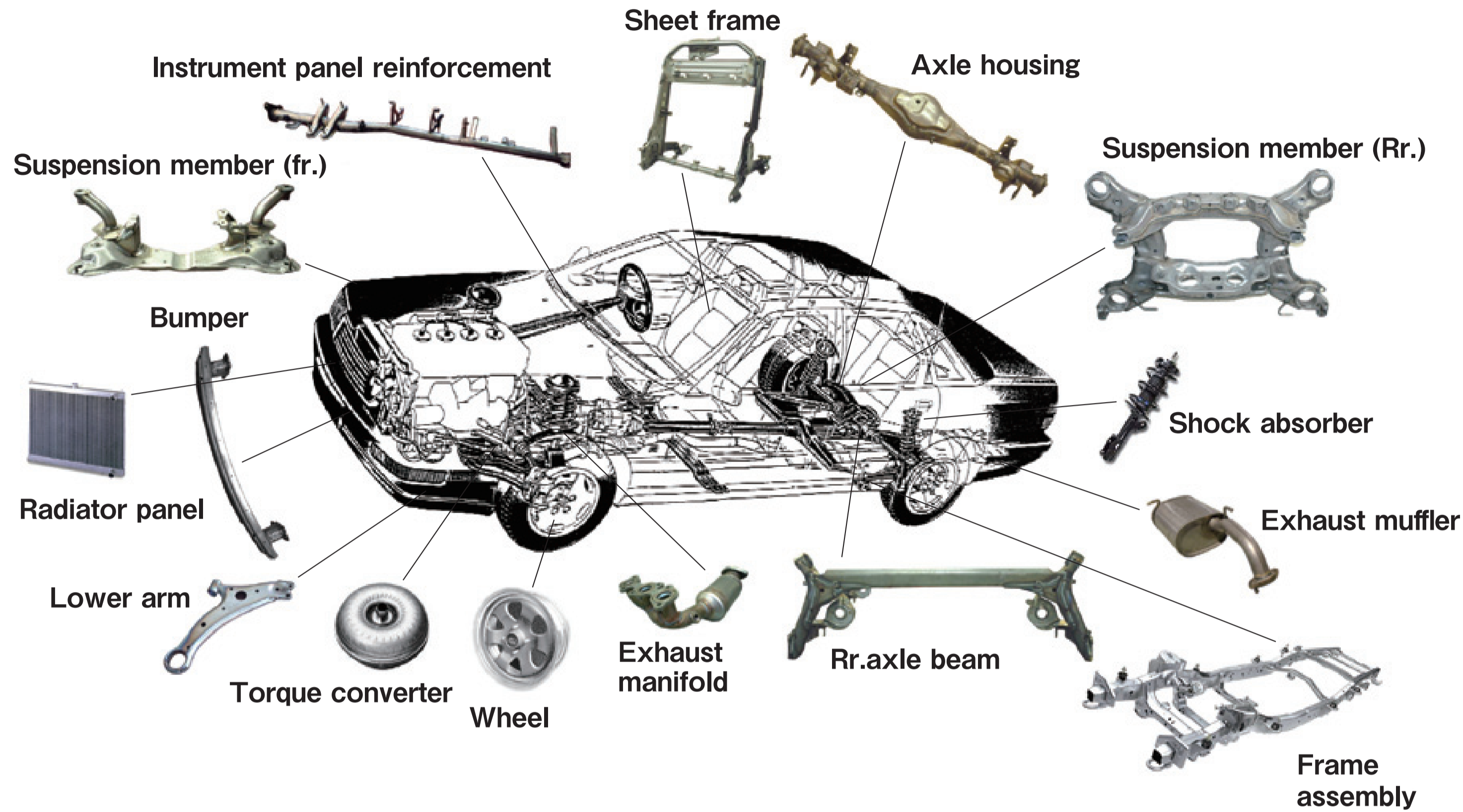


Welding Consumables for Automobile

Example of typical automobile assembly that the arc welding is applied.



Example of recommended wires to automobile assemblies

Name of assembly	Type of steel and thickness	Welding method	Recommended brand	wire dia.
•Frame •Lower arm •Axle beam •Axle housing •Torque converter	Carbon steel 2.3~4.0mm	CO ₂	FAMILIARC SE-50T, MG-50T	1.2mm
		MAG Pulsed-MAG	FAMILIARC SE-A50, MIX-50 FAMILIARC SE-A50S FAMILIARC MIX-50FS	
•Axle housing for truck	Carbon steel 3.2~6.0mm	CO ₂	FAMILIARC MG-50	1.2~1.6mm
•Impact beam •Bumper	Carbon steel sheet and pipe 1.4~2.3mm	CO ₂	FAMILIARC SE-50T, MG-50T	1.2mm
		MAG Pulsed-MAG	FAMILIARC SE-A50, MIX-50	
•Suspension member	Carbon steel 1.6~2.6mm	CO ₂	FAMILIARC SE-50T, MG-50T	1.2mm
		MAG Pulsed-MAG	FAMILIARC SE-A50, MIX-50 FAMILIARC MIX-50FS	
	Galvanized steel 1.6~2.6mm	CO ₂	FAMILIARC SE-50T, MG-1Z FAMILIARC MX-100Z	1.2mm
		Pulsed-MAG	FAMILIARC SE-A1TS, MIX-1TS FAMILIARC MIX-1Z	
Anti-corrosion Steel 1.6-2.6mm	Pulsed-MAG	FAMILIARC SE-A1TS, MIX-1TS		
•Instrument panel reinforcement •Sheet frame	Carbon steel 0.8~1.6mm	CO ₂	FAMILIARC SE-50T, MG-50T	0.8~
		MAG	FAMILIARC SE-A50, MIX-50	1.0mm
•Car body	Galvanized steel 0.6~1.0mm	MAG porarity power souce	FAMILIARC MG-1SP	1.2mm
			FAMILIARC MIX-1T	0.6~ 0.9mm
•Exhaust muffler •Exhaust manifold	Stainless steel 0.8~2mm	MAG	PREMIARC MX-A430M (Ferritic)	1.2mm
		Pulsed-MIG	PREMIARC MG-S430M (Ferritic) PREMIARC MG-S430NbS (Ferritic) PREMIARC MG-S308 (Austenitic)	1.2mm

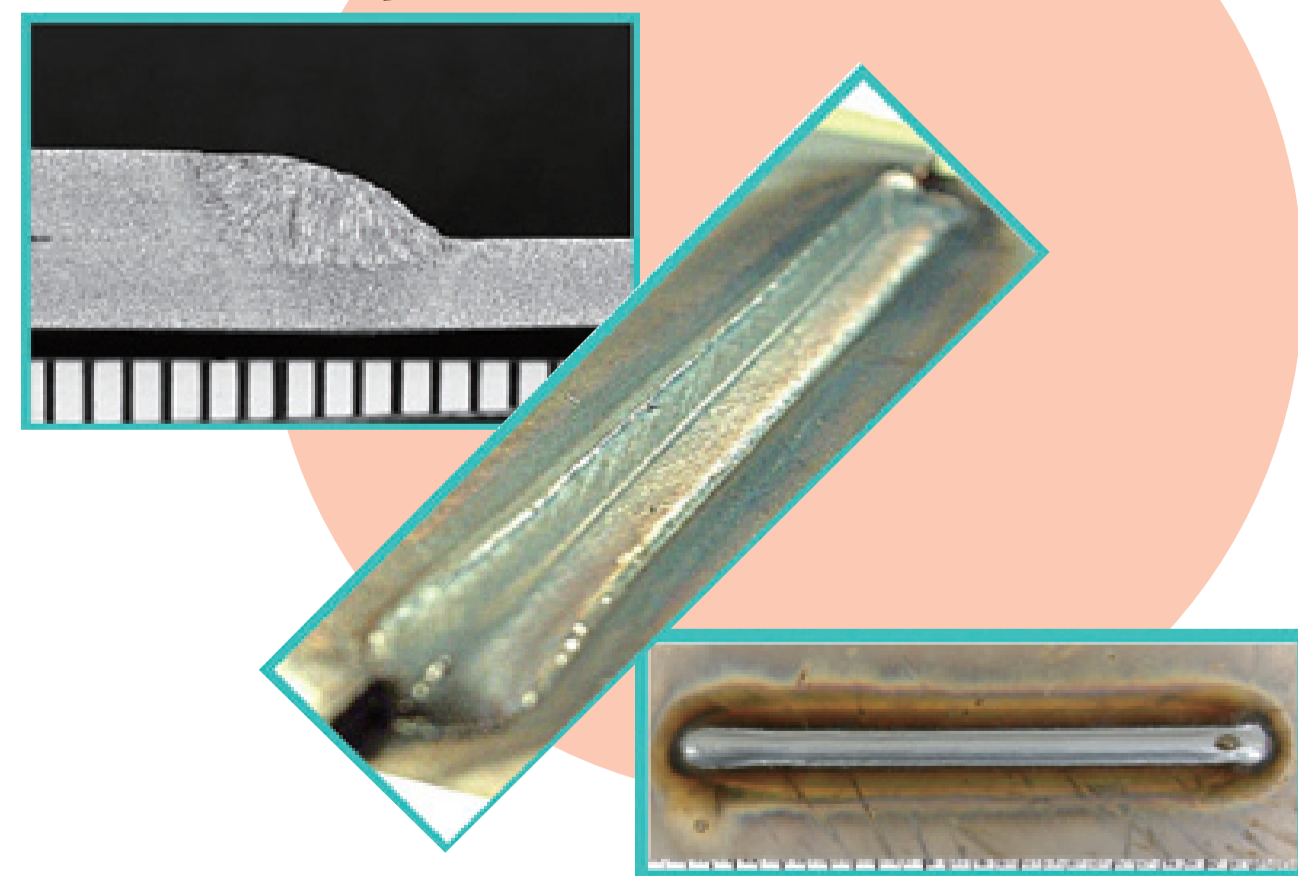
New concept wires that have excellnet bead apperance,shape,paint-ability

FAMILIARC MIX-50FS SE-A50FS

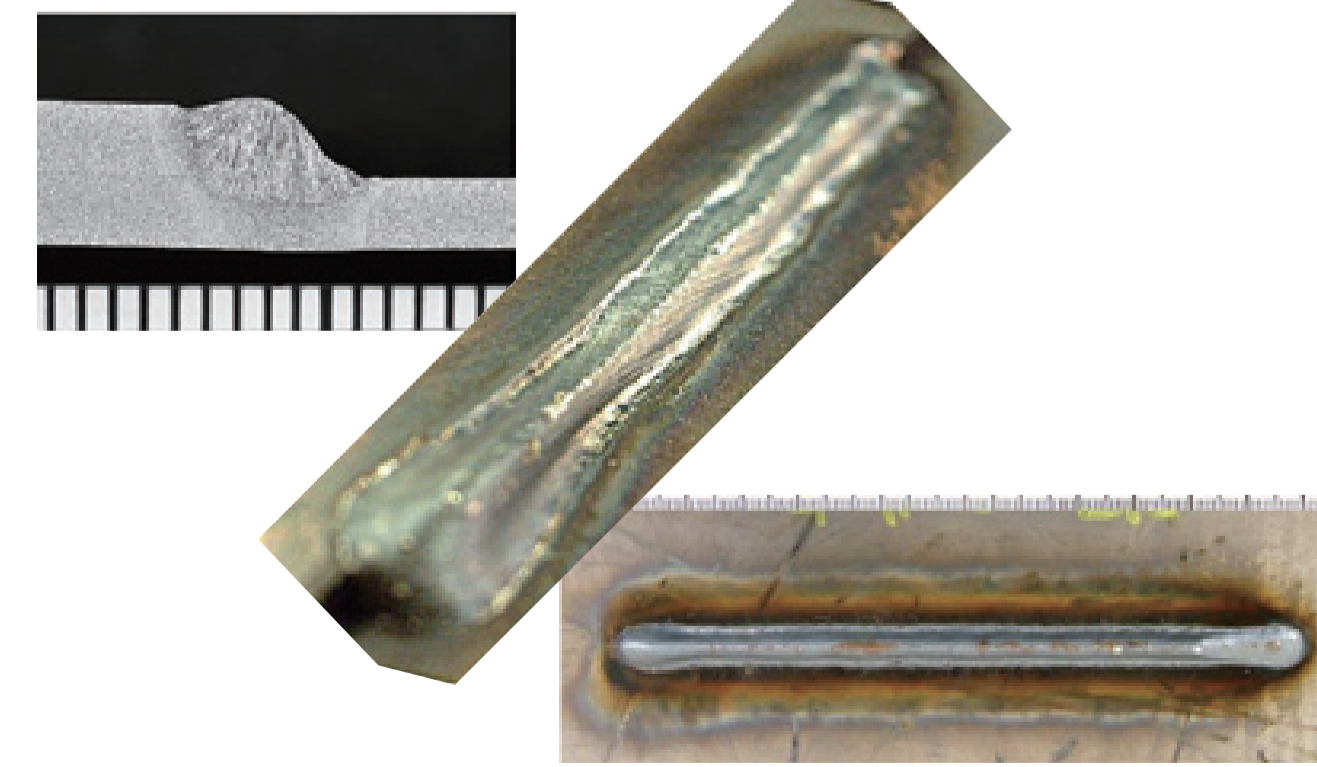
Classification of welding wire for Ar+CO₂ mixed gas by the viscosity of molten weld metal

Surface type	Viscosity		
	larger ←		→ Lower
Cu-coated	FAMILIARC MIX-1TS	FAMILIARC MIX-50	FAMILIARC MIX-50FS NEW
SE(non-Cu)	FAMILIARC SE-A1TS	FAMILIARC SE-A50	FAMILIARC SE-A50FS
Recommned	Galvanized steel, Downhill	General purpose	Flat, horizontal

FAMILIARC MIX-50FS, SE-A50FS



Conventional (YGW12)



FAMILIARC SE-50T, SE-A50

- Non-Cu-coated technology (Kobe Steel original)
- Excellent generality
- Non trouble by Cu-flake
- Low spatter generation
- Excellent wire feedability
- Eco-friendly

FAMILIARC MIX-1TS, MIX-1Z, MX-100Z

- Suitable for galvanized steel
- Low spatter generation
- Prevent-ability of blow holes and pits is excellent.
- MIX-1TS and MIX-1Z is for pulsed-MAG welding, MX-100Z is for CO₂ welding.

PREMIARC MX-A430M

- Metal cored wire for ferritic stainless steel contained 13-17%Cr.
- Excellent crack resistance
- Excellent corrosion resistance in the high temperature range